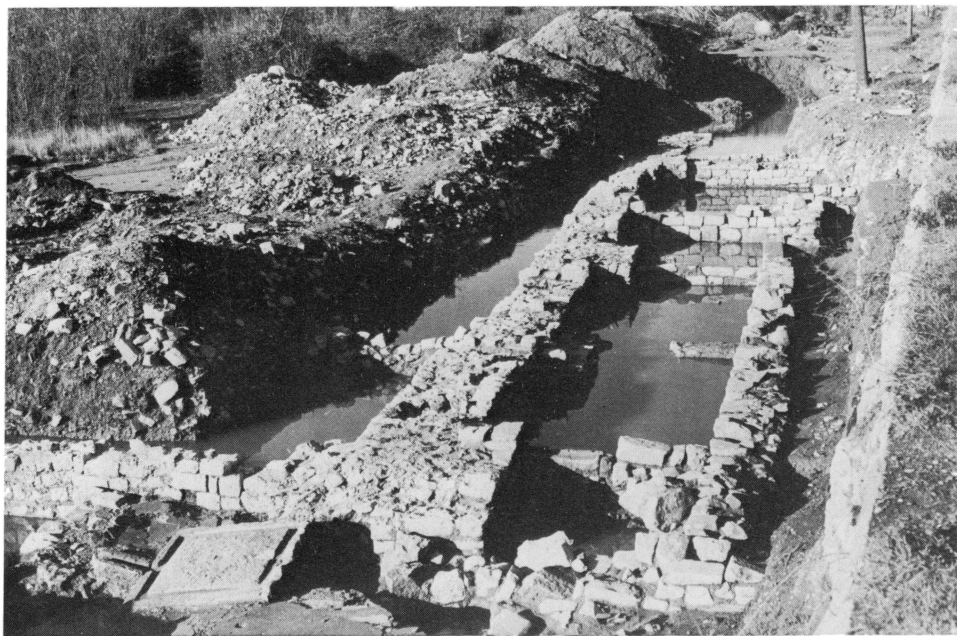
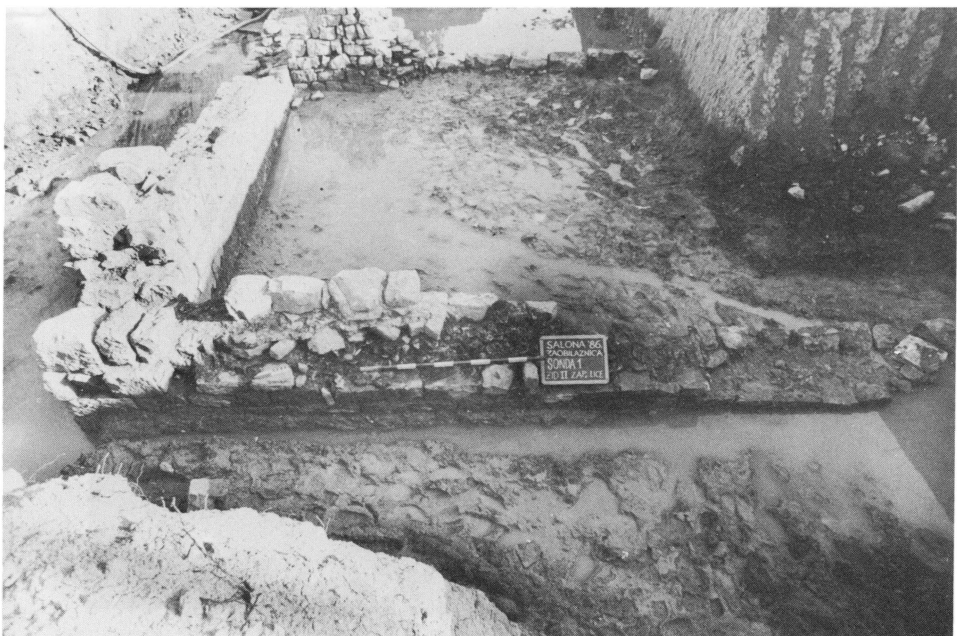


## TABLE - PLATES



1



2

T. I, 1. Sektor I — Sonda 16, ostaci horreuma s tijeskom; 2. Sektor I — Sonda 1, ostaci arhitekture. — Pl. I, 1. Sektor I — Trench 16, remains of the horreum with a press; 2. Sektor I — Trench 1, architectural remains.



1



2

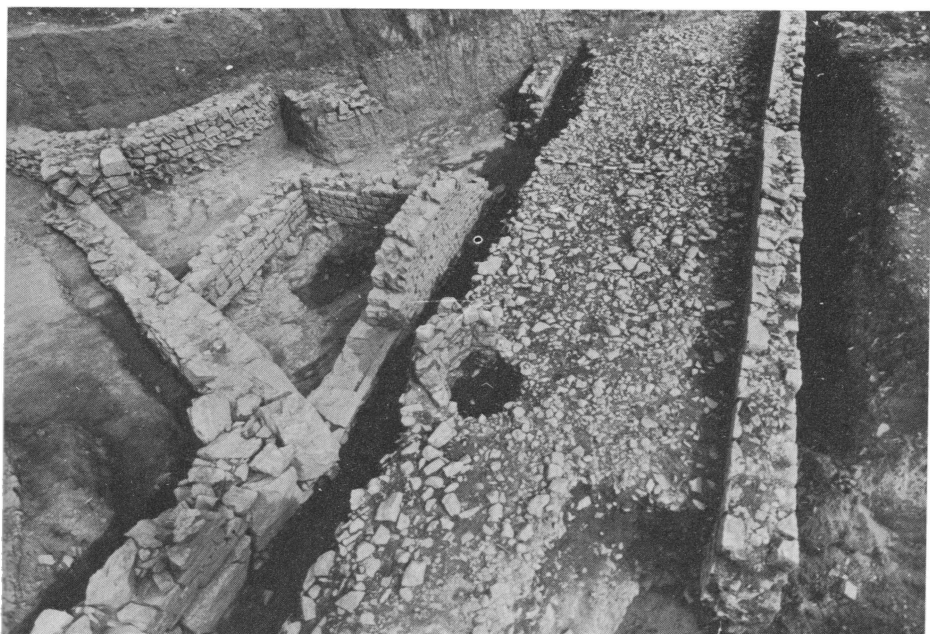
*T. II, 1. Sektor I — Sonda 10, ulomak reljefa s likom Jupitera pronađenog u glavnom kanalu ulice; 2. Sektor I — Sonda 16, kapitel od muljike ili mekog vapnenca. — Pl. II, 1. Sektor I — Trench 10, fragment of relief with Jupiter found in the main drain of the street; 2. Sektor I — Trench 16, capital of soft limestone*



*T. III, Sektor I — Sonda 10 jug, antička ulica s bazama za stupove sačuvanim -in situ«. — Pl. III, Sektor I — Trench 10 south, Roman street with column bases preserved »in situ«.*



**T. IV, Sektor II — »Terme«, ostaci višebojnog starokršćanskog mozaika s prikazom jelena koji liže rosu s lišća. — Pl. IV, Sektor II — »Thermae« remains of an Early Christian polychrome mosaic with a deer.**

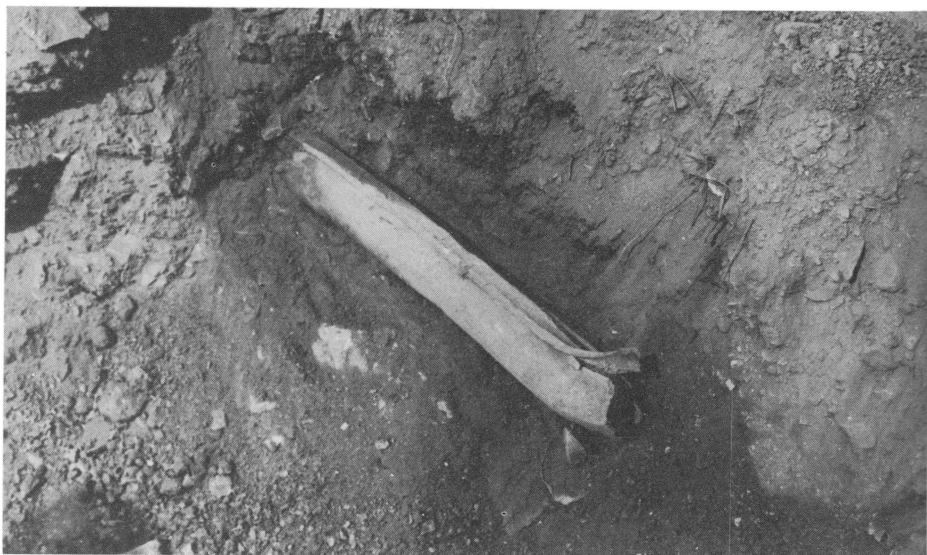


1



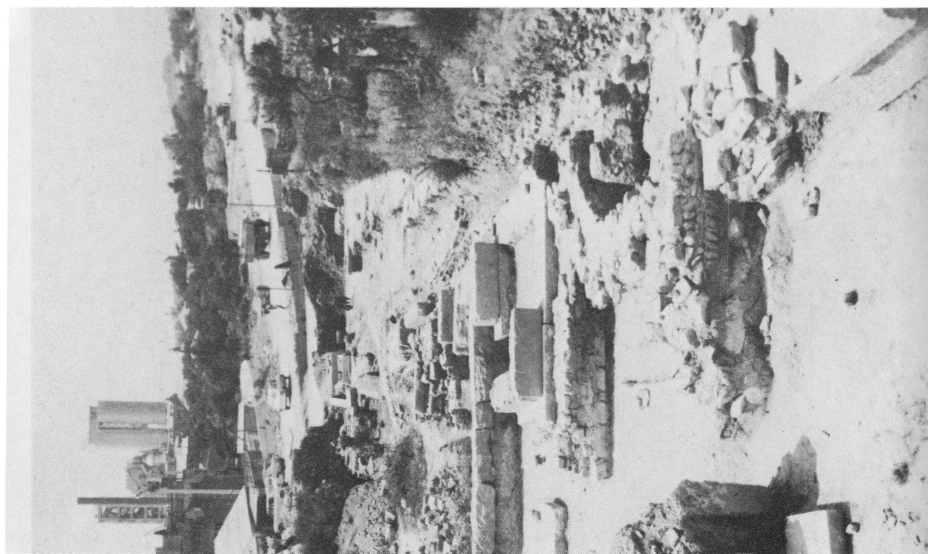
2

Т. V, 1. Сектор II — Сonda 22, античка улица поплочана облутцима уз коју је прo-  
 сто-ја I; 2. Сектор II — Сonda 22, просторија I са гробовима. — Pl. V. 1. Sector II —  
 Trench 22, Roman sreet paved with cobbles with cella I on the west side; 2. Sector  
 II — Trench 22, cella I with graves.



1

2

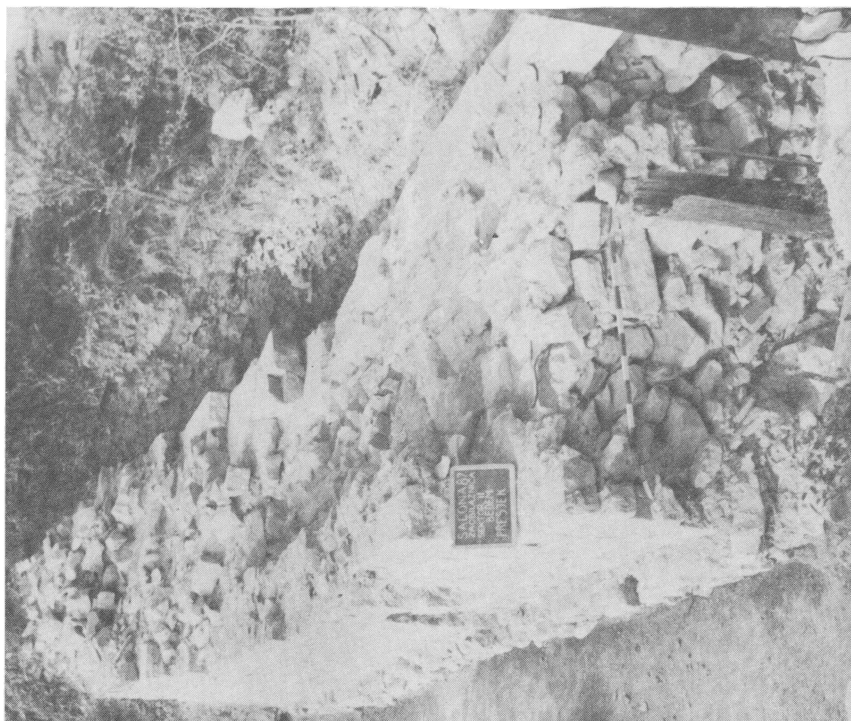


*T. VI, 1. Sektor II, dio zapadne nekropole unutar bedema. Antička olovna cijev ispod pločnika ceste za Trogir; 2. Sektor II, dio zapadne nekropole unutar bedema. Antička cesta za Trogir južno od koje su ostaci grobnih parcela. — Pl. VI, 1. Sector II, part of the western necropolis within the city walls. Roman lead pipe beneath the paving of the Trogir road; 2. Sector II, part of the western necropolis within the city walls. Remains of grave lots south of the Roman road to Trogir.*



1

2



**T. VII, 1. Sektor III, zapadna nekropola južno od Kaštelanske ceste. Jedan od žrtvenika pronađenih na početku istraživanja; 2. Sektor II, bedemi južno od Kaštelanske ceste. — Pl. VII, 1. Sector III, western necropolis south of the Kaštela road. One of the arae found at the beginning of the excavations; 2. Sector II, city walls south of the Kaštela road.**



1



2

*T. VIII,1. Sektor III, zapadna nekropola južno od Kaštelanske ceste. Prolaz između parcela s drenažnim kanalom; 2. Sektor III, zapadna nekropola južno od Kaštelanske ceste. Antička cesta za Trogir uz koju su grobne parcele. — Pl. VIII, 1. Sektor III, western necropolis south of the Kaštela road. Passage between grave lots with a drain channel; 2. Sector III, western necropolis south of the Kaštela road. Roman road to Tragurion with adjacent grave lots.*



1



2

T. IX, 1. Sektor III, zapadna nekropola južno od Kaštelanske ceste. Grob 244;  
 2. Sektor III, zapadna nekropola južno od Kaštelanske ceste. Pogled na »tabernu«  
 i »murazzo« sa vratima 1. — Pl. IX, 1. Sector III, western necropolis south of the  
 Kaštela road. Grave no. 244; 2. Sector III, western necropolis south of the Kaštela  
 road. A view of the »taberna« and »murazzo« with door no. 1.

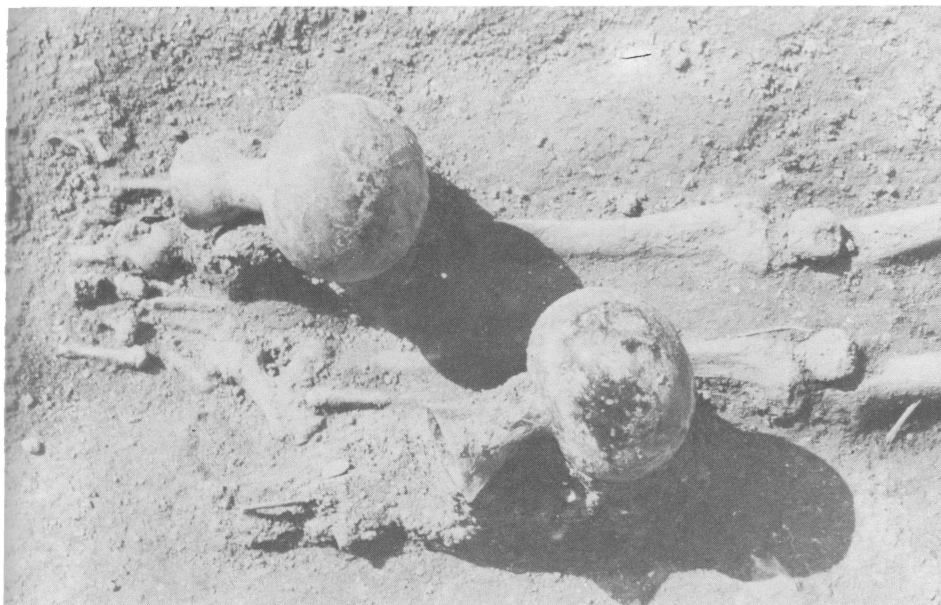


1

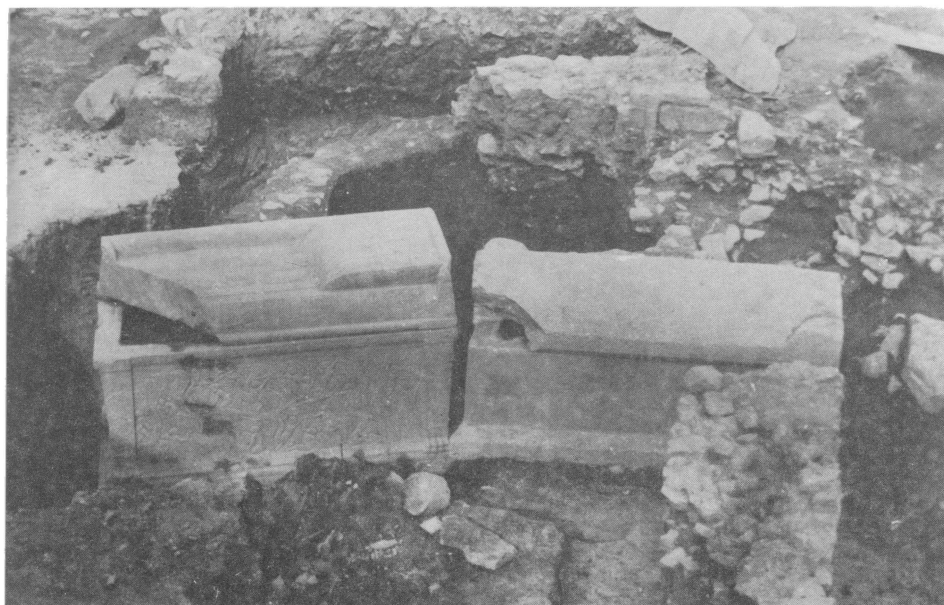


2

T. X, 1. Sektor III, zapadna nekropola sjeverno od Kaštelanske ceste. Grob 409; Sektor III, zapadna nekropola sjeverno od Kaštelanske ceste. Grobne parcele u dva reda. — Pl. X, 1. Sektor III, western necropolis north of the Kaštela road. Grave no. 409; 2. Sektor III, western necropolis north of the Kaštela road. Grave lots in two rows.

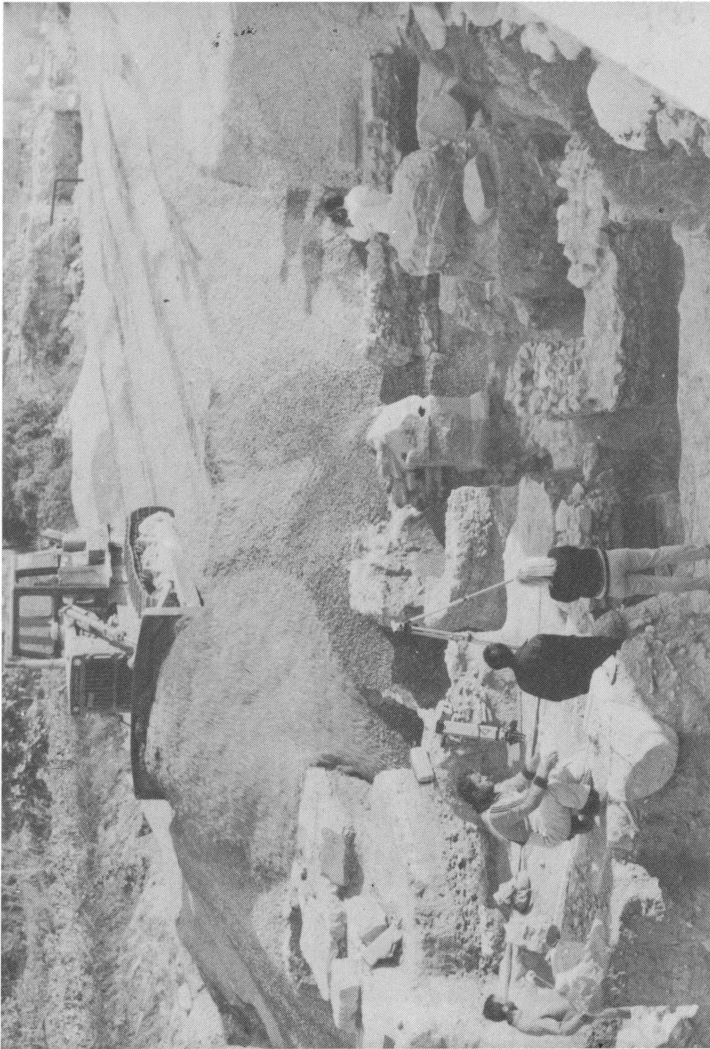


1

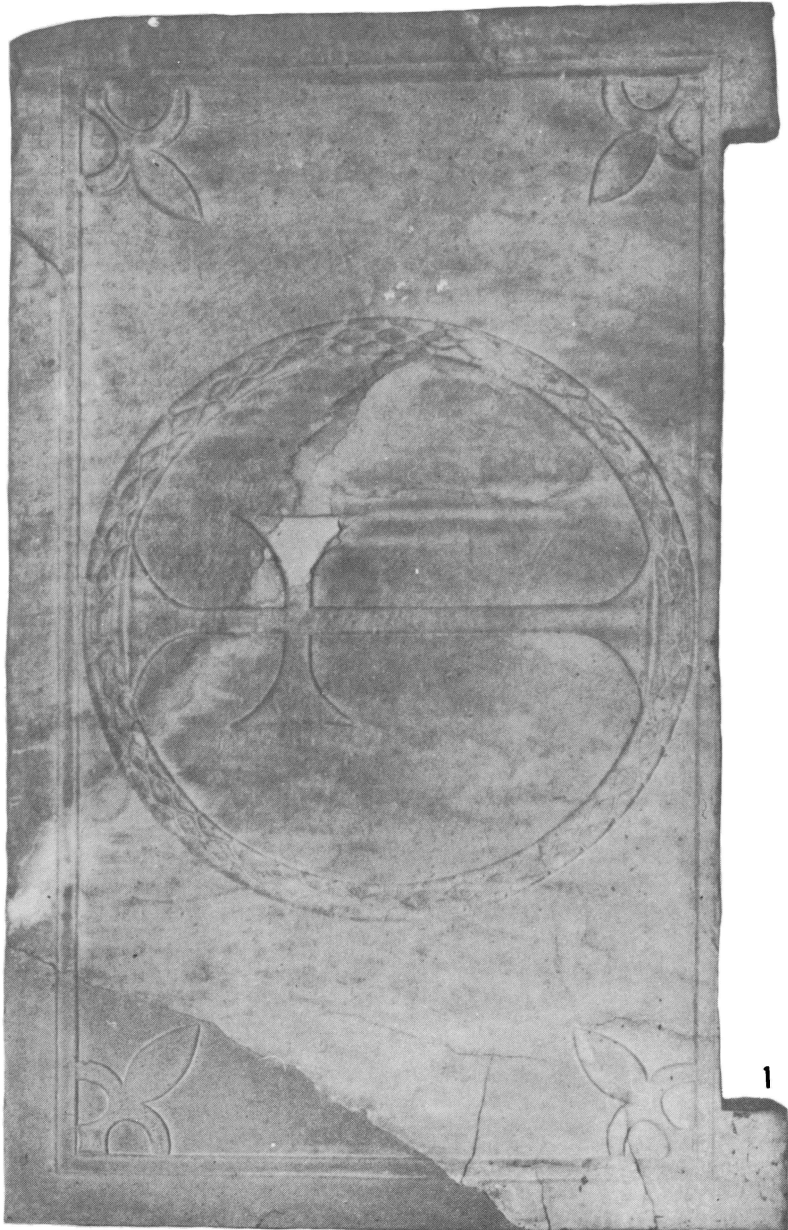


2

T. XI,1. Sektor III, zapadna nekropola sjeverno od Kaštelanske ceste. Dvije staklene boce — karakterističan grobni prilog; 2. Sektor III, zapadna nekropola sjeverno od Kaštelanske ceste. Sarkofazi br. 21 i 22. — Pl. X, 1. Sektor III, western necropolis north of the Kaštela road. Two glass flasks, a characteristic grave good; 2. Sector III, western necropolis north of the Kaštela road. Sarcophagi no 21 and 22.



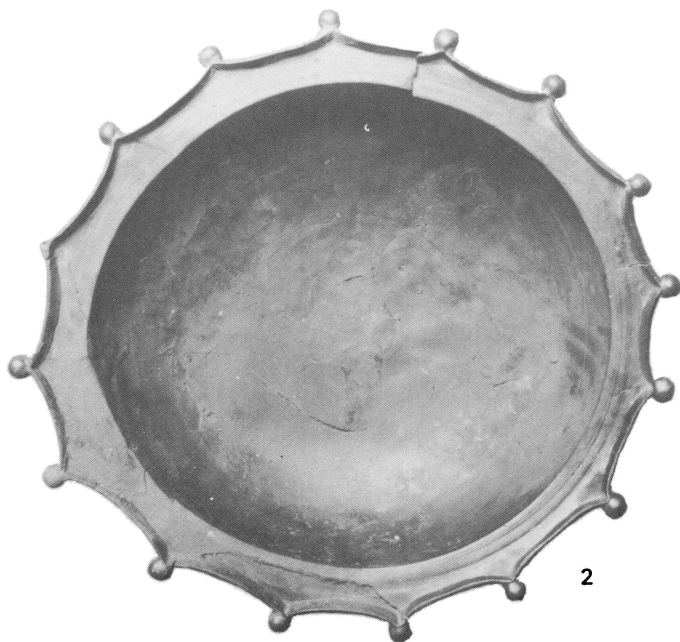
**T. XII, Sektor III, zapadna nekropola. Petak 13. 11. 1987 — posljednji dan rada na terenu. — Pl. XII, western necropolis, Friday the 13th of November 1987 — the last day of excavations.**



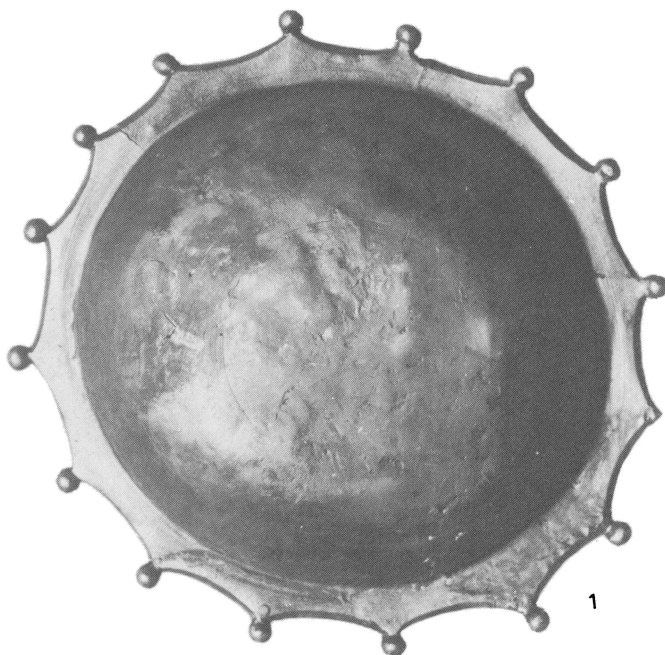
**T. XIII, Plutej, neobjavljeno (foto I. Račić). — Pl. XIII, An unpublished pluteus (photo: I. Račić)**



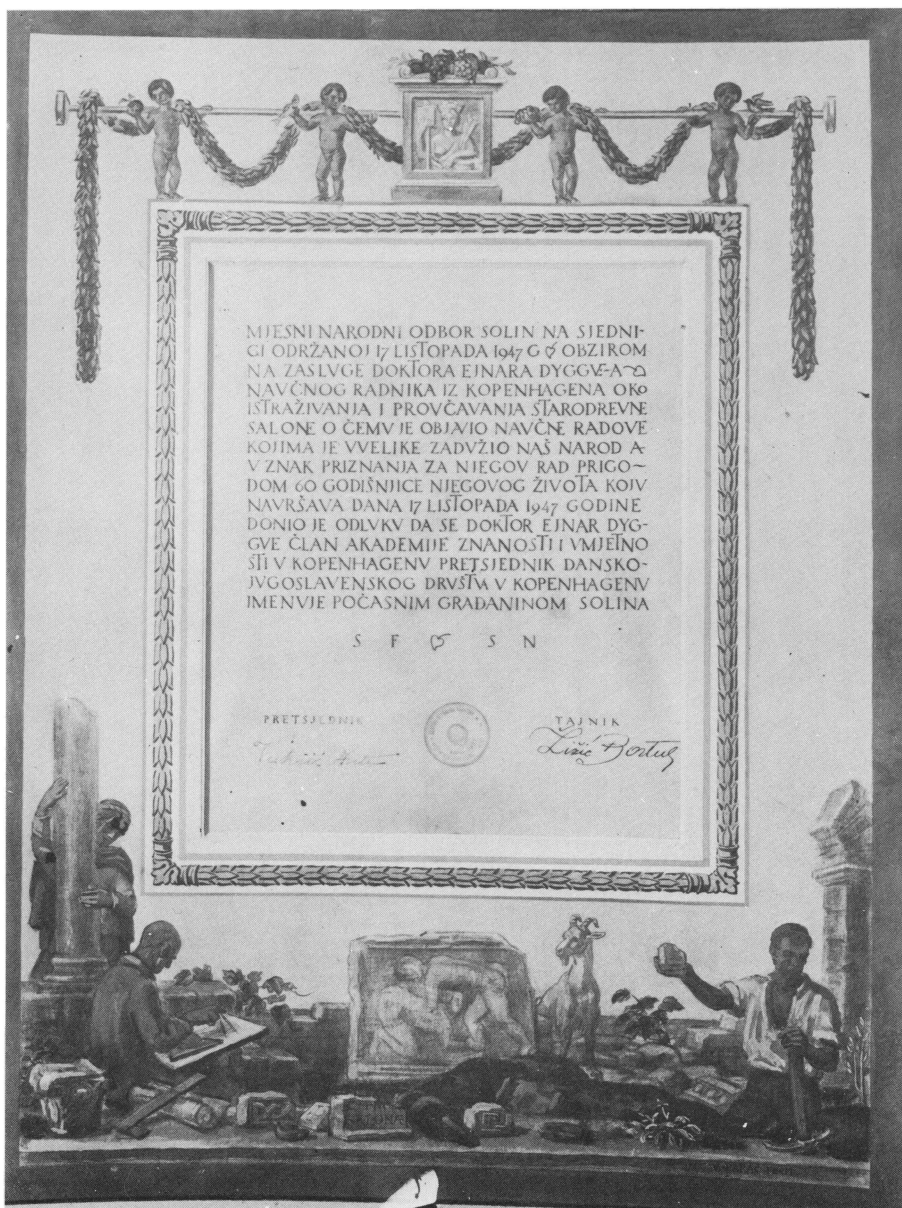
T. XIV, 1. Natpis iz Rupotine, neobjavljeno (foto: E. Marin, Arheološki muzej — Split); 2. Dva fragmenta menze, neobjavljeno (foto: I. Račić) — Pl. XIV, 1. An unpublished inscription from Rupotina (photo: E. Marin, Archaeological Museum in Split); 2. Two fragments of mensa, unpublished (photo: I. Račić)



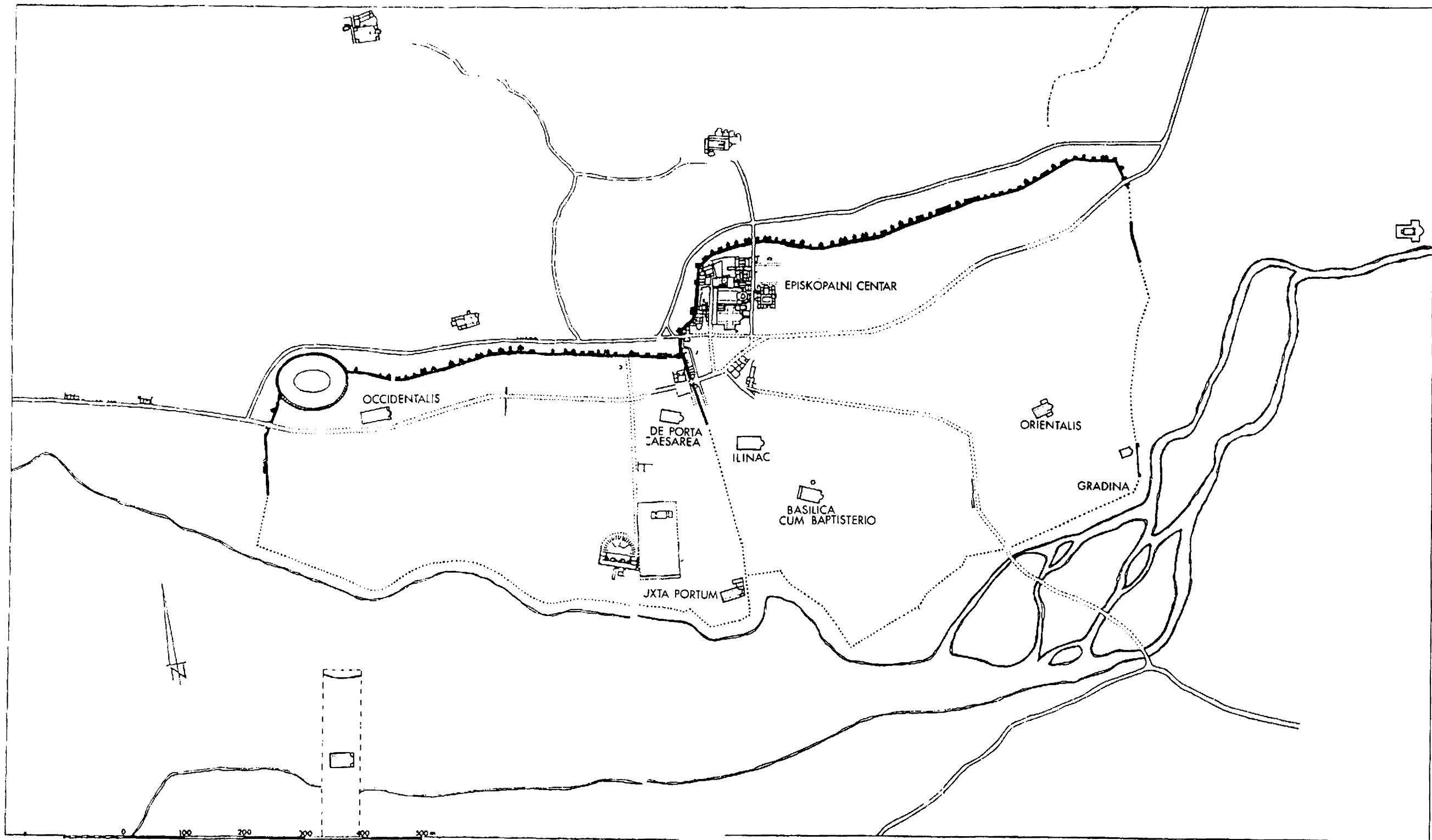
**T. XV, 1. Brončana svjetiljka u obliku pauna (foto: I. Račić); 2. Velika brončana zdjela (foto: I. Račić). — Pl. XV, 1. A bronze lamp in the form of a peacock (photo: I. Račić); 2. A large bronze bowl (photo: I. Račić)**



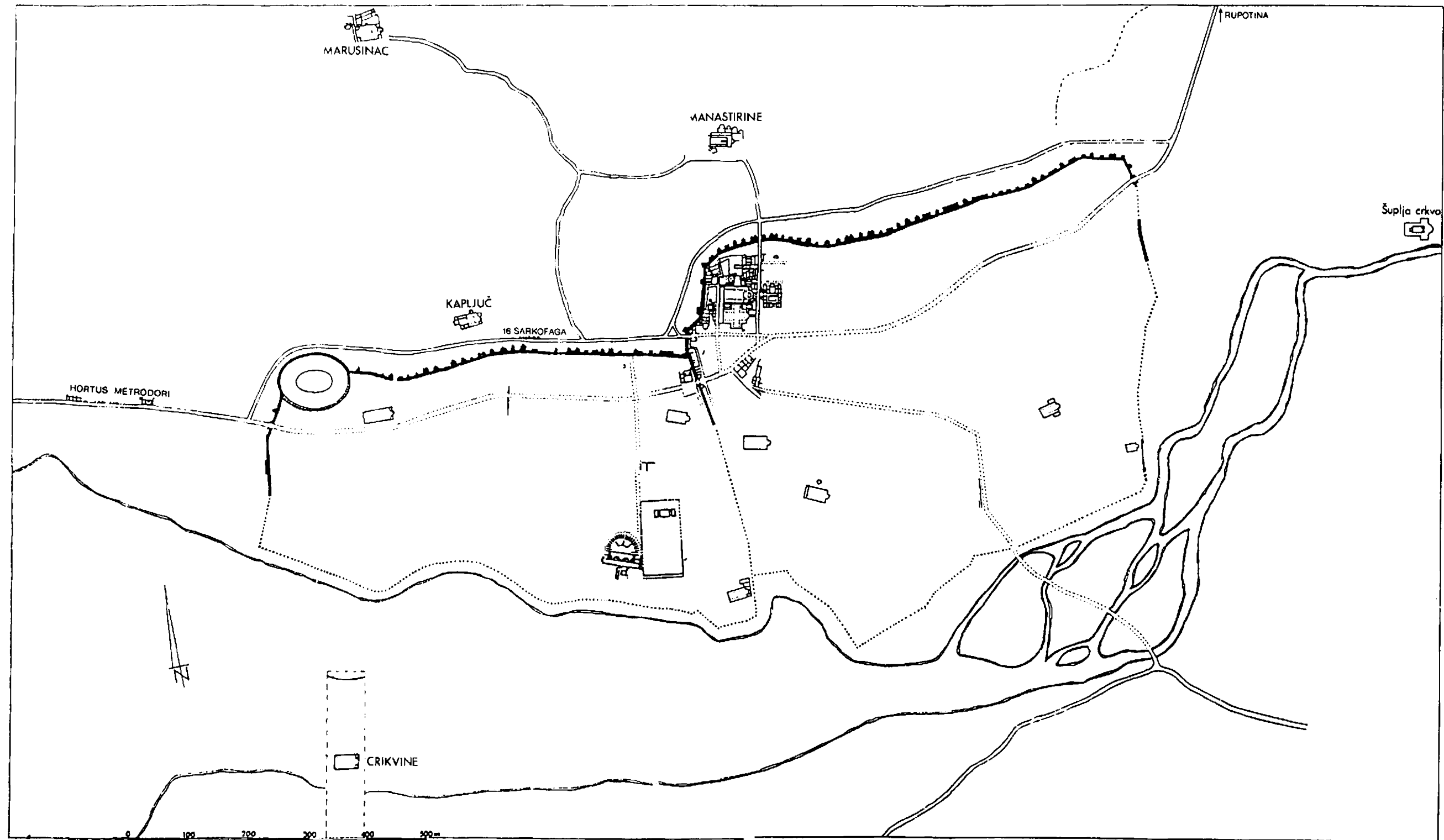
**T. XVI, 1,2. Velika brončana zdjela (foto: I. Račić). — Pl. XVI, 1,2. A large bronze bowl (photo: I. Račić)**



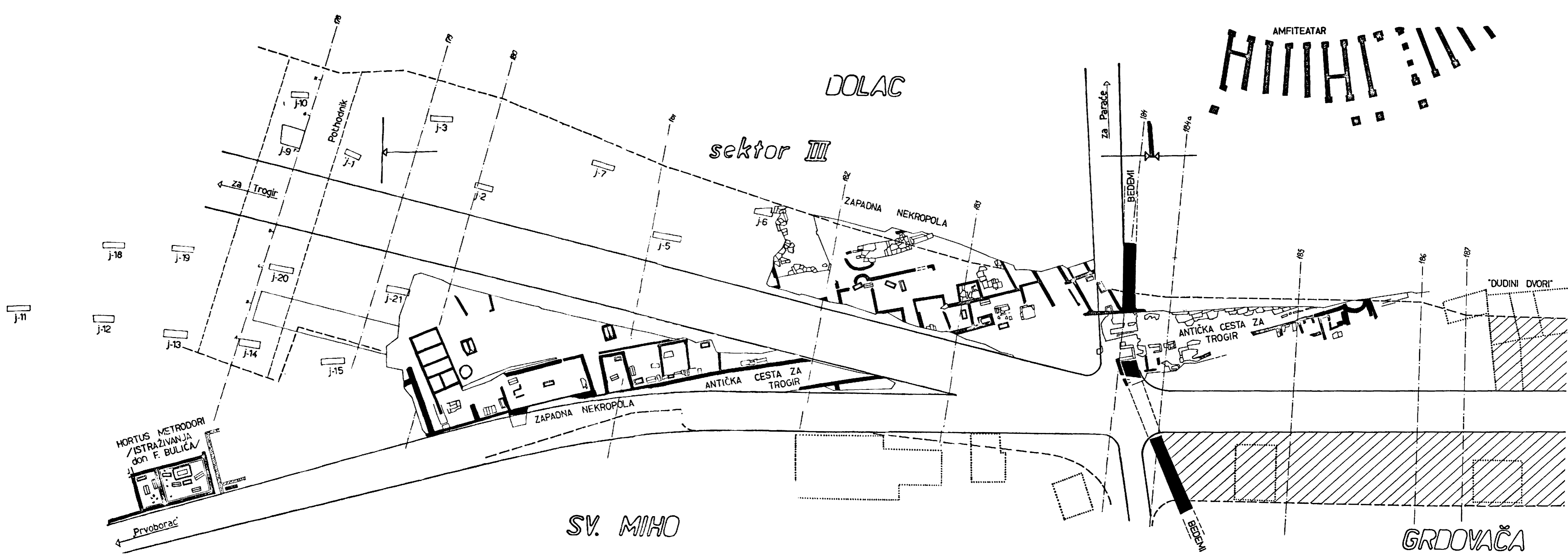
T. XVII, Diploma kojom je Ejnar Dyggve proglašen počasnim građaninom Solina 1947. god. (rad Vjekoslava Parača). — Pl. XVII, A diploma declaring Ejnar Dyggve an honorary citizen of Solin in 1947, made by Vjekoslav Parač.



Plan 1. Crkvena urbana topografija Salone (prema E. Dyggve revidirao E. Marin, crtež B. Pendera) — Map 1. The religious urban topography of Salona (After E. Dyggve, revised by E. Marin. Drawn by B. Pender)



Plan 2. Cemeterijalna topografija starokršćanske Salone (prema E. Dyggveu revidirao E. Marin, crtež B. Pendera). — Map 1. The cemeterial topography of Early Christian Salona (After E. Dyggve, revised by E. Marin. Drawn by B. Pender)



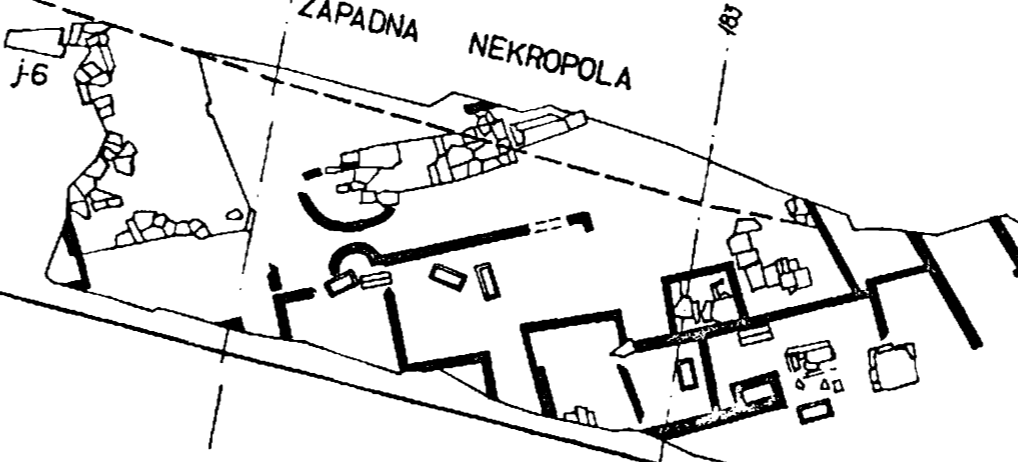
DOLAC

sektor III

AMFITEATAR



ZAPADNA NEKROPOLA



"DUDINI DVORI"

ANTIČKA CESTA ZA TROGIR

ANTIČKA CESTA ZA TROGIR

ZAPADNA NEKROPOLA

SV. MIHO

GRDOVAČA

za Parožce

BEDEMI

BEDEMI

za Trogir

Prvoborac

HORTUS METRODORI  
/ ISTRAŽIVANJA  
don F. BULIČA

j-18

j-19

j-20

j-21

j-13

j-14

j-15

j-9

j-10

j-3

j-2

j-7

j-5

j-6

j-11

j-12

180

181

182

183

184

185

184

184a

185

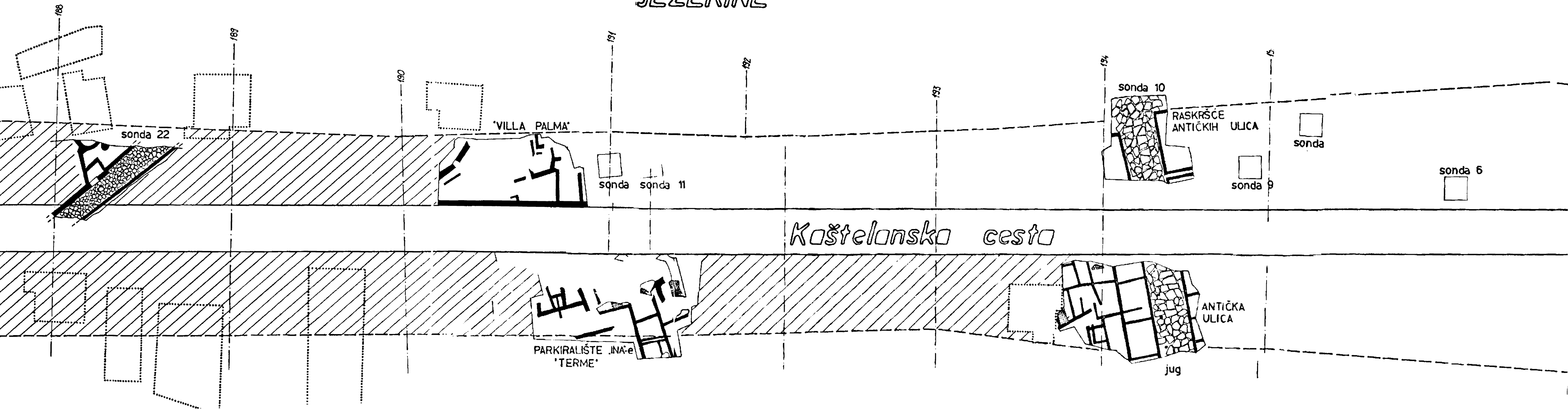
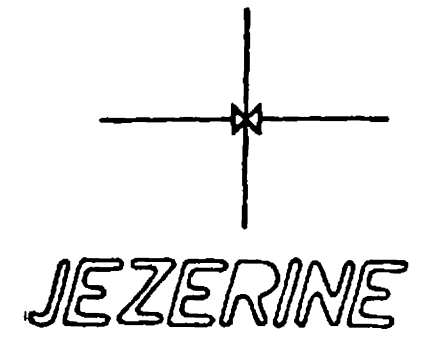
186

187

sektor II

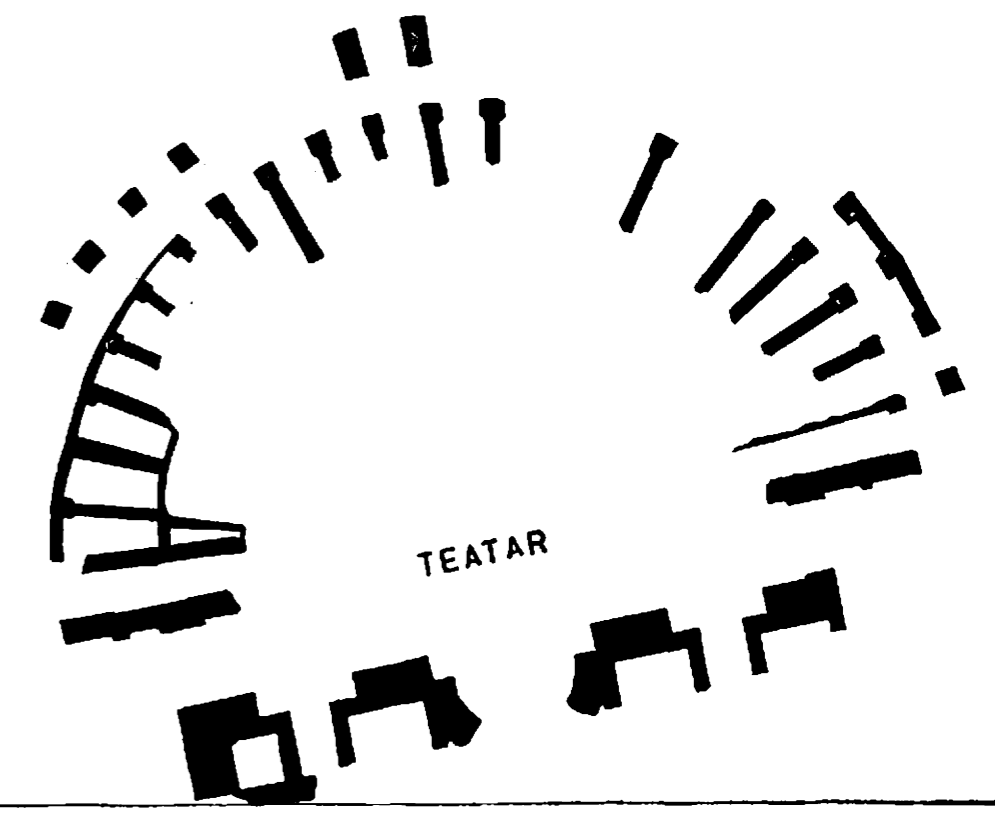
sektor I I

+22 600,00  
+22 600,00  
+22 600,00

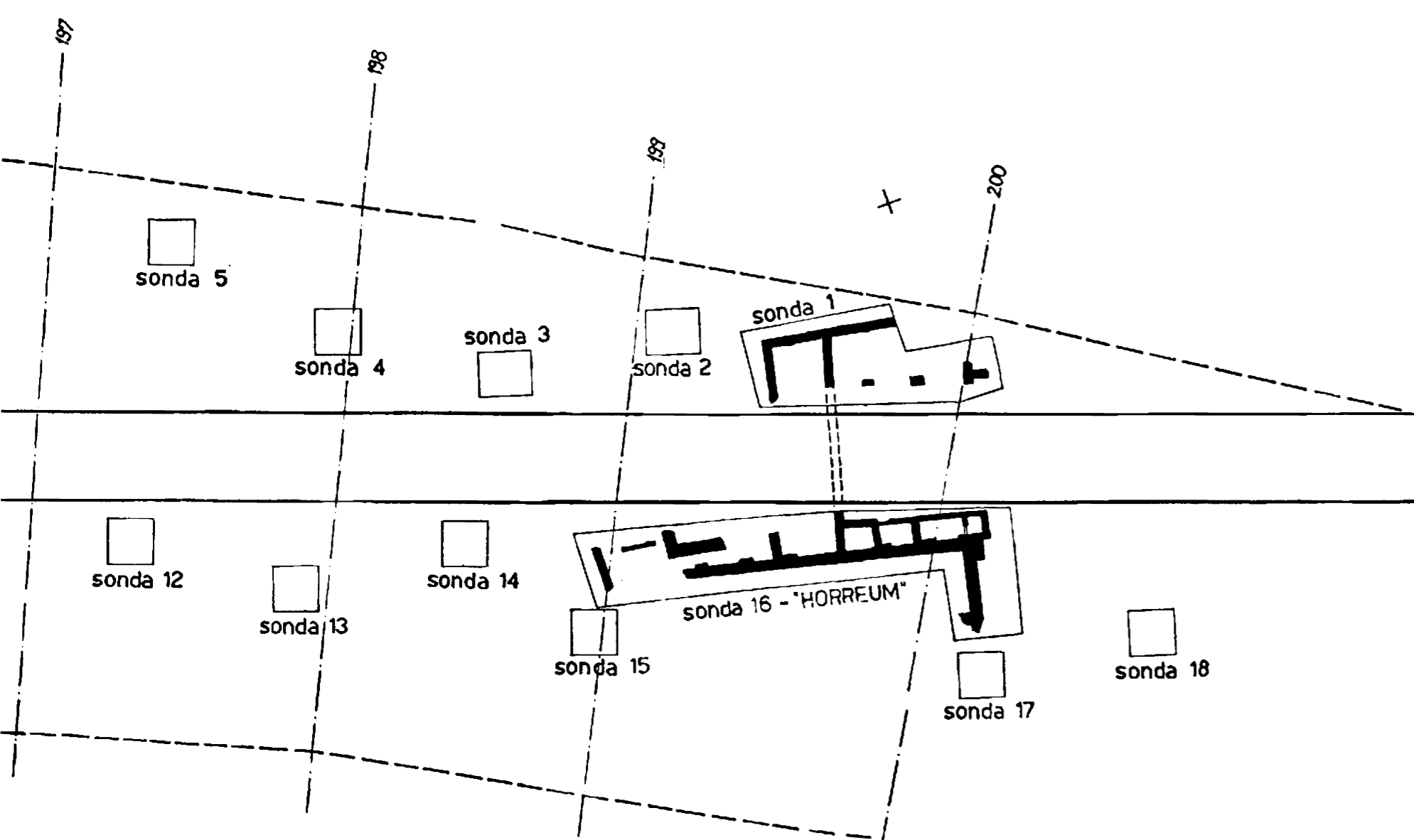


PLAN  
1

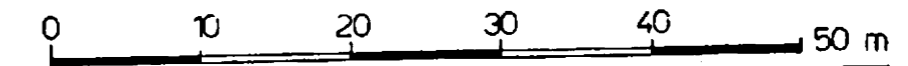
JEZERINE



za Split →



- LEGENDA :
- J-2 JAMA
  - GRANICA ZAHVATA ARHEOLOŠKIH ISTRAŽIVANJA
  - ▨ ISTRAŽENO PODRUČJE BEZ NALAZA
  - STAMBENA IZGRADNJA
  - ANTIČKI MOZAIK

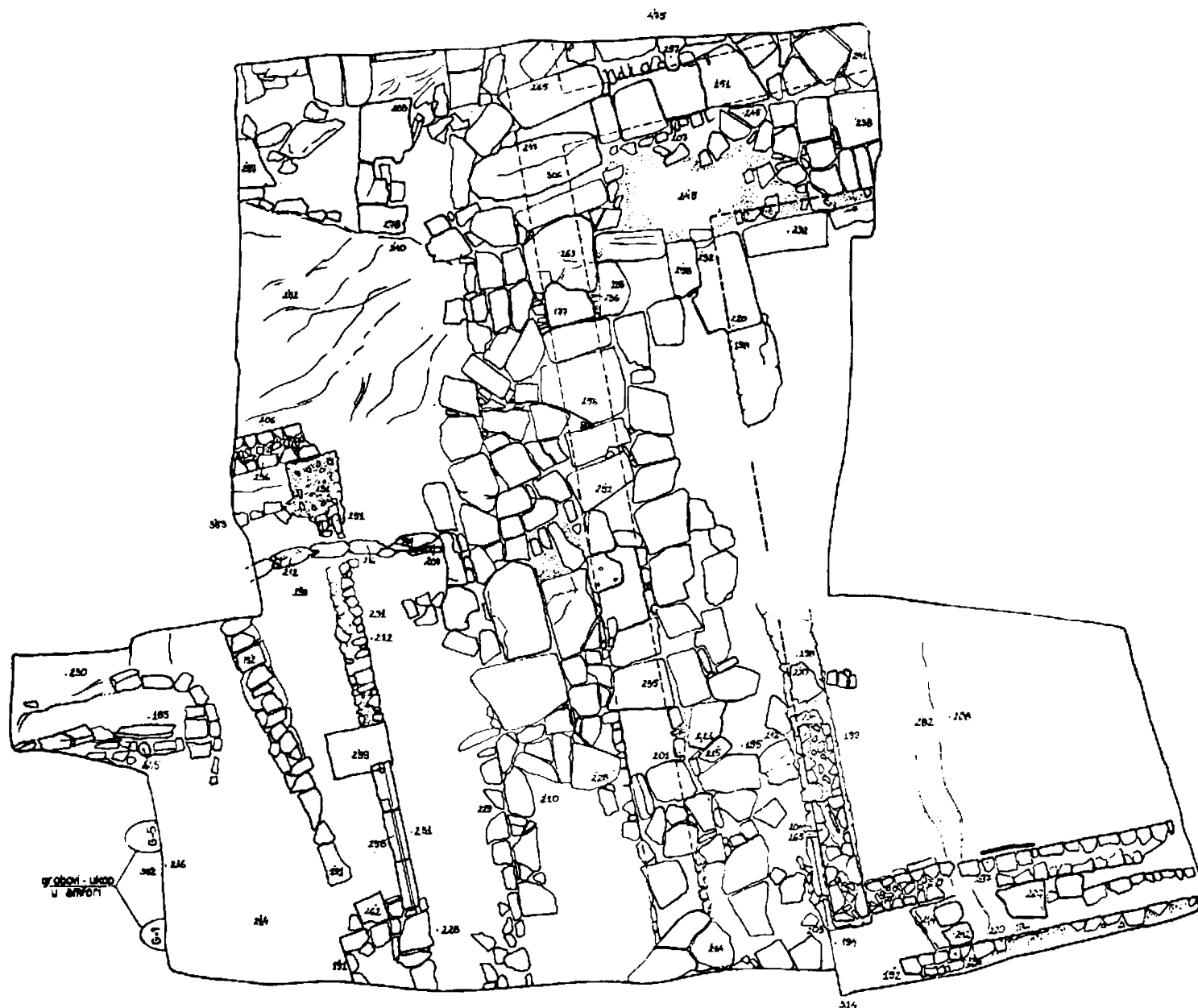


SALONA '86 /87. - ZAOBILAZNICA

PREGLEDNA KARTA ARHEOLOŠKIH NALAZA  
MJ 1:500

IZRADILJ: B PENDER                    D. GERIĆ dia  
CRTEŽ: S ŽITNIK                        S. BOŽIĆ dia

# PLAN 3



gr. obični - ulazni  
u sponi

SALONA '86 /87. - ZAIBILAZNICA

SEKTOR I - SONDA 10

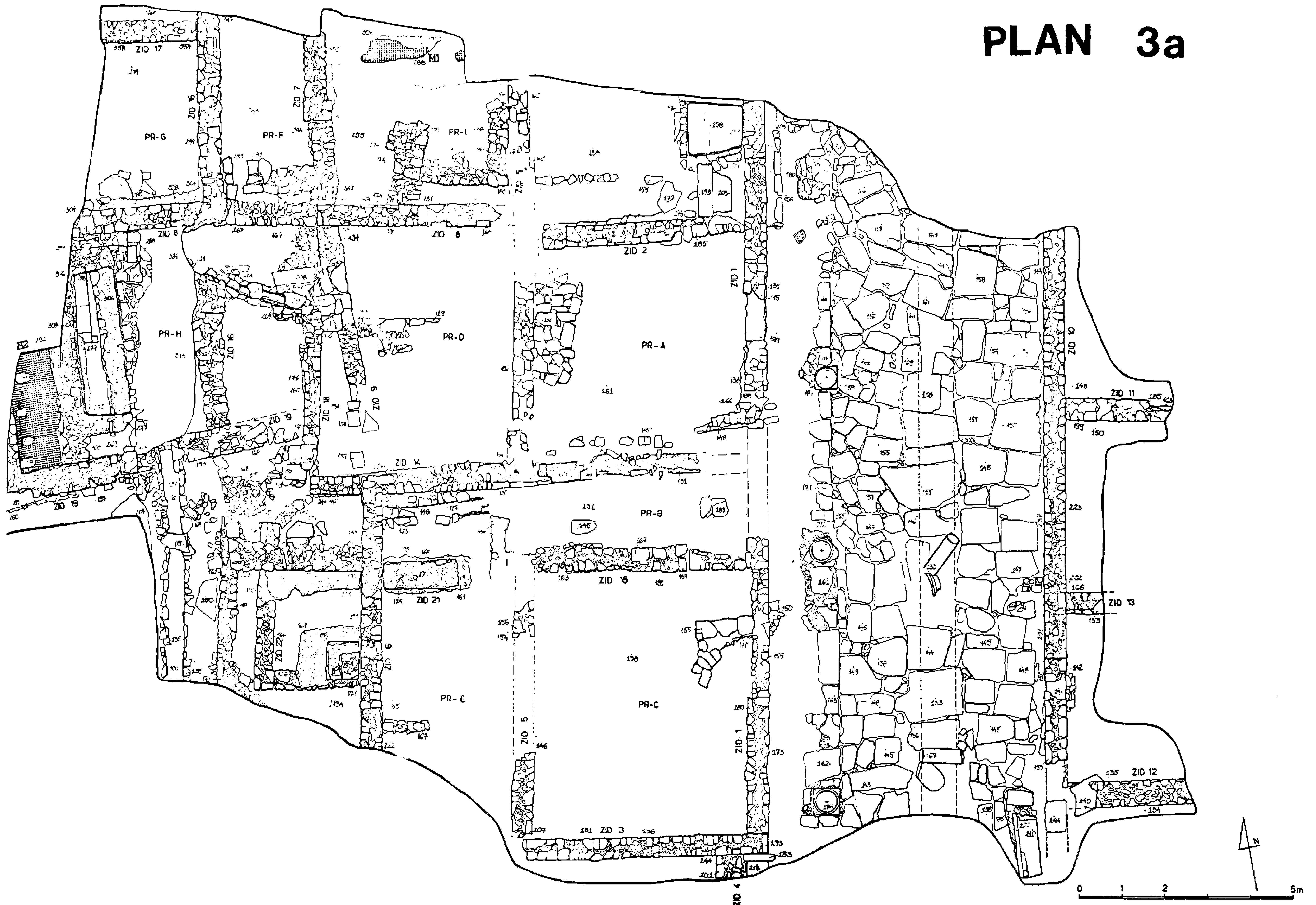
SADRŽAJ: TLOCRT  
M: 1:50

DATUM: XI 1986

SNMIO: PENDER BRANKO

OBRAĐA: BOŽIĆ SANDA

# PLAN 3a



### LEGENDA

PR-D - PROSTORIJA D  
 - MOZAIK

### SALONA '86/87. - ZAIBILAZNICA

SEKTOR I - ULICA-JUG

SADRŽAJ : TLOCRT

MJ. 1:50

DATUM : IV-V 1987.

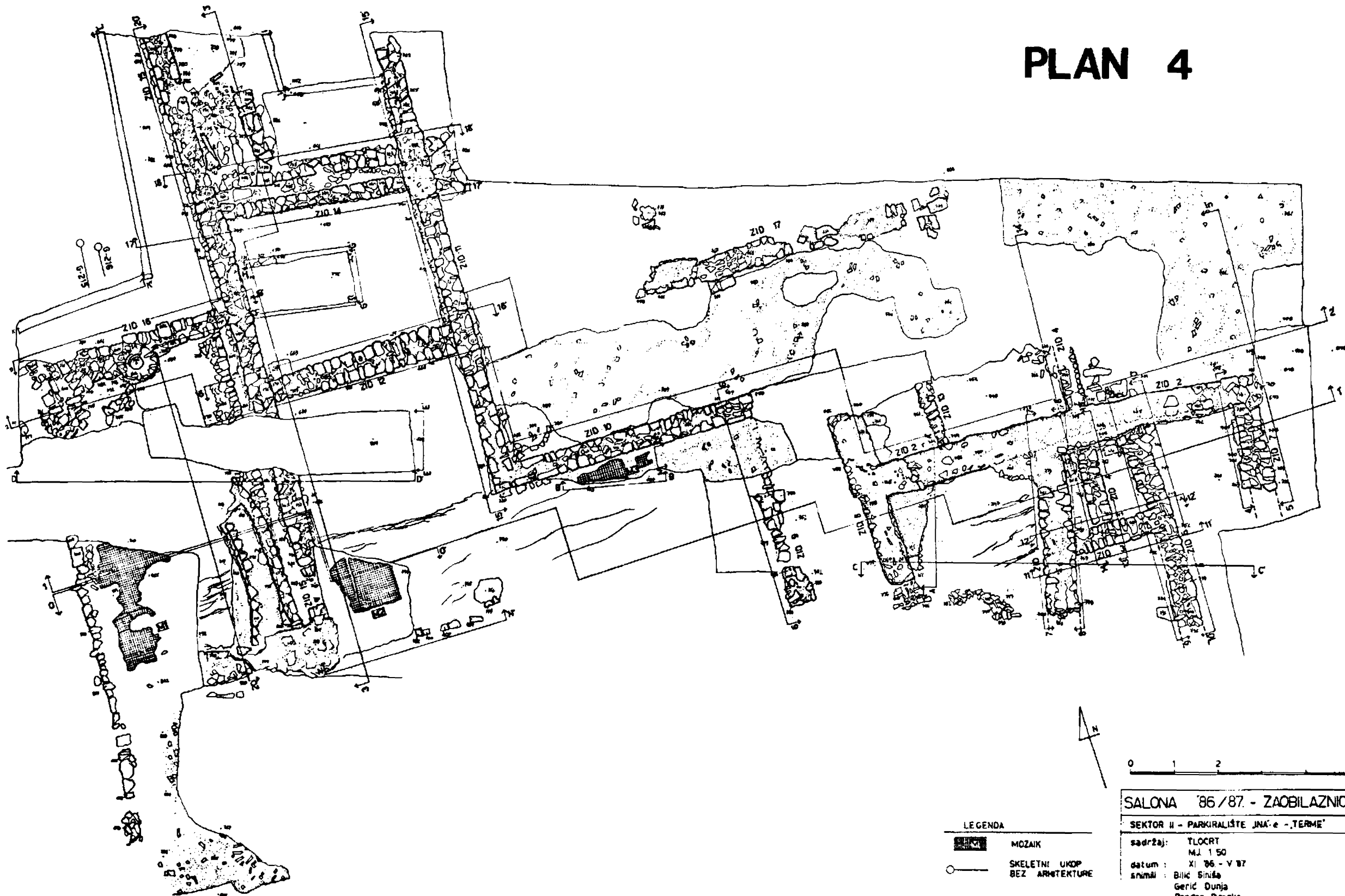
SNIMILI : BILIĆ SINIŠA



GERIĆ ĐUNJA

OBRADA : PENĐER BRANKO

BOŽIĆ SANDA

# PLAN 4



- LEGENDA
-  MOZAIK
  -  SKELETNI UKOP  
BEZ ARHITEKTURE

SALONA '86/87. - ZAIBILAZNICA

SEKTOR II - PARKIRALIŠTE JNA'e - TERME'

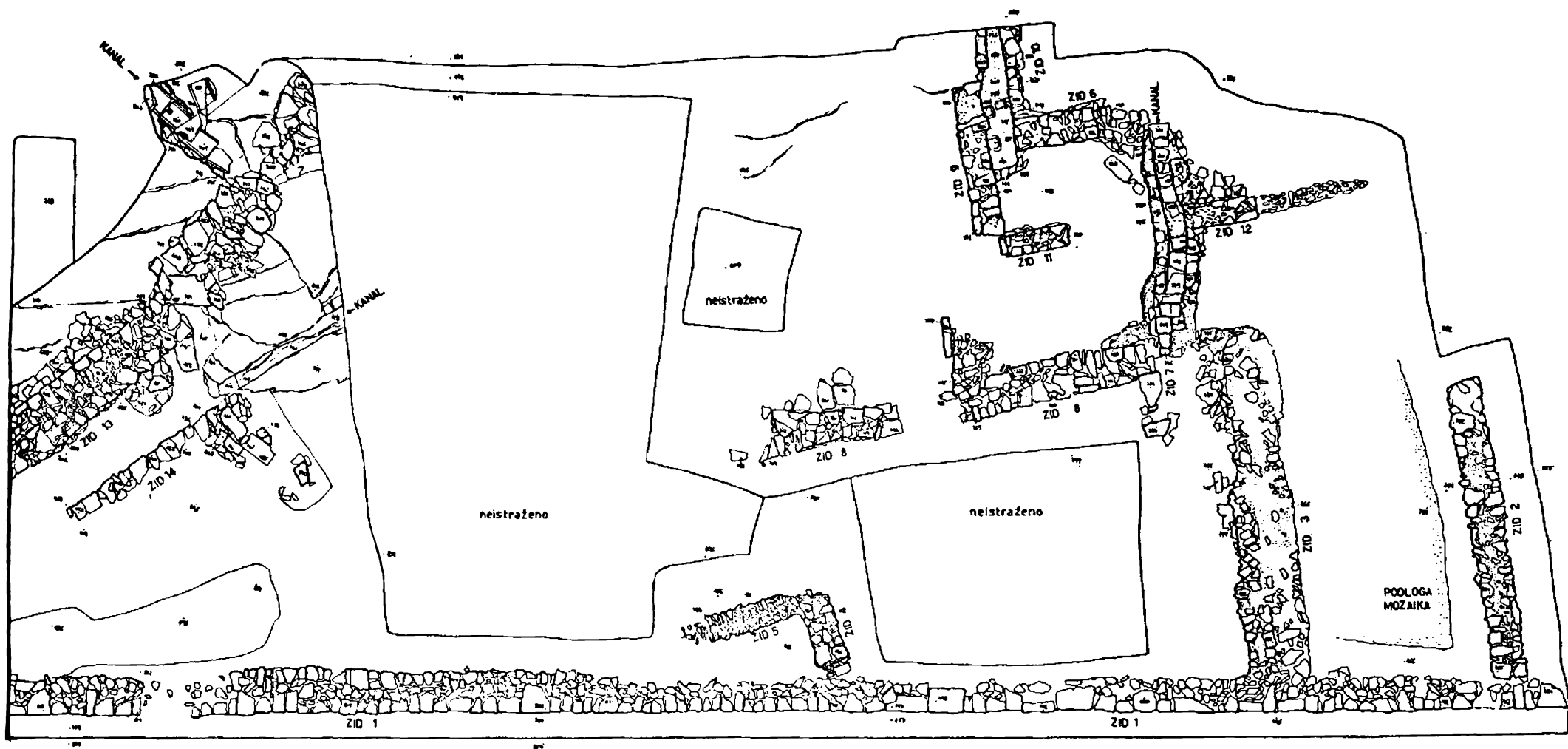
sadržaj: TLOCRT  
MJ. 1 50

datum : XI '86 - V '87

snimci : Bilic Sinija  
Gerić Dunja  
Pender Branko

obrada : Božić Sanda

# PLAN 5



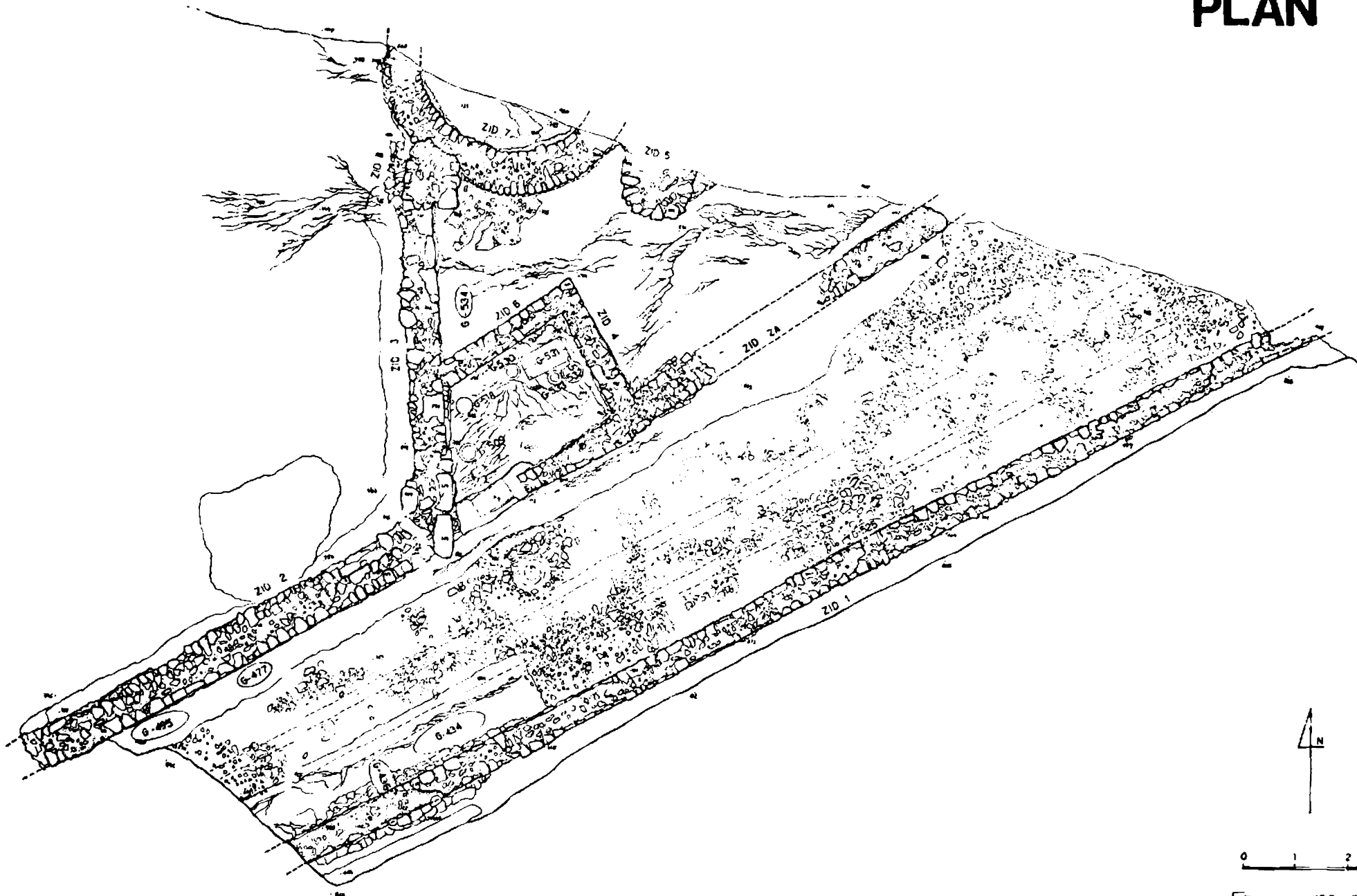
Trogir — Kaštelanska cesta — Split



0 1 2 5m

SALONA '86 /87 - ZAORUŽNICA	
SEKTOR II - VILLA PALMA	
SADRŽAJ:	TLOCRT
MJ:	1:50
DATUM:	VII 1987
SNIMILI:	BILIĆ SINIŠA
	GERIĆ DUNJA
OBRAĐA:	BOŽIĆ SANDA

# PLAN 6

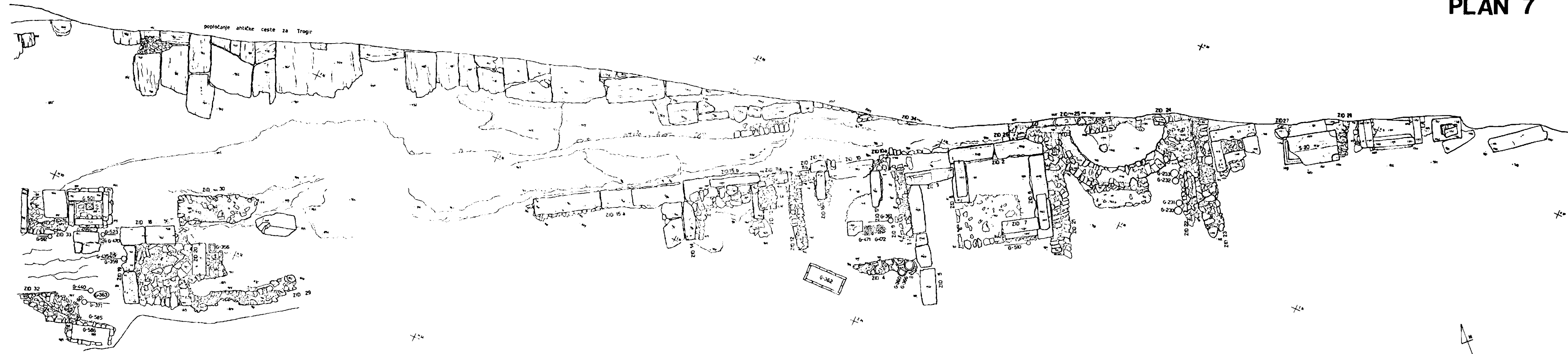


0 1 2 5m

LEGENDA	
oznaka	groba
	keramička urna
	kamena urna - cilindrična
	ukop u amfori
	sarkofag

SALONA '86/87. - ZAIBILAZNICA	
SEKTOR II - SONDA 22	
SADRŽAJ	TLOCRT
MJ.	1:50
DATUM	X 1987
ŠKICAJ	PENDER BRANKO
	ŽITNIK SREČKO
OBRADA	BOŽIC SANDA

# PLAN 7



popločanje antičke ceste za Trogir

- LEGENDA:
- SPALJEN GROB BEZ ARHITEKTURE
  - KERAMIČKA URNA
  - KAMENA URNA /CILINDRIČNA/
  - KAMENA URNA /ČETVRTASTA/
  - SKELETNI GROB BEZ ARHITEKTURE
  - GROB U AMFORI
  - KAMENA GROBNICA
  - SARKOFAG

0 1 2 3 4 5 m

SALONA '86/87 - ZAobilaznica

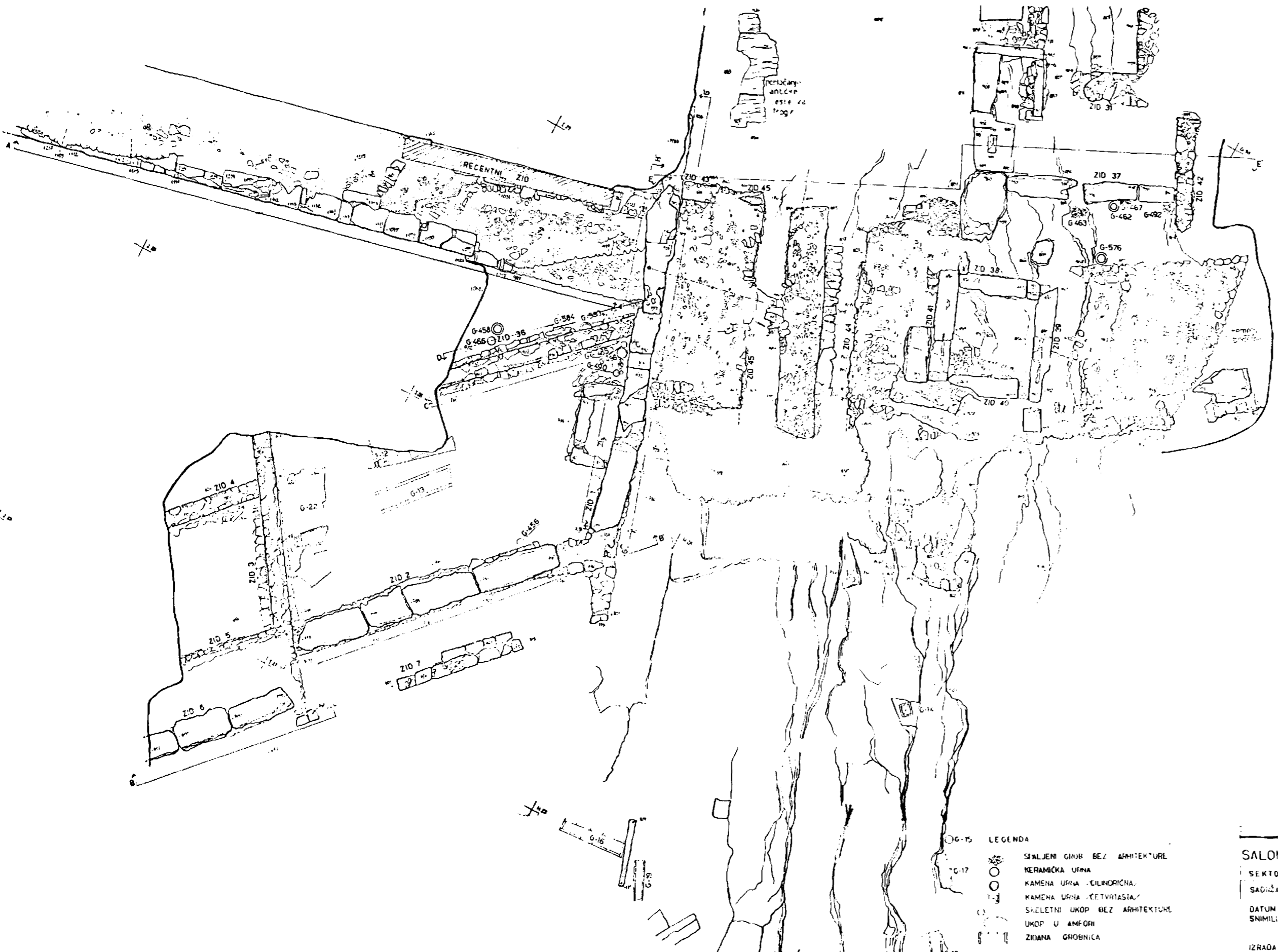
SEKTOR II - ISTOČNO OD BEDEMA /RUPUS/

SADRŽAJ: TLOCRT  
M: 1:50

ŠNIMLI: BILJK SINŠA  
GERJK DUNJA

DATUM: VI 1987

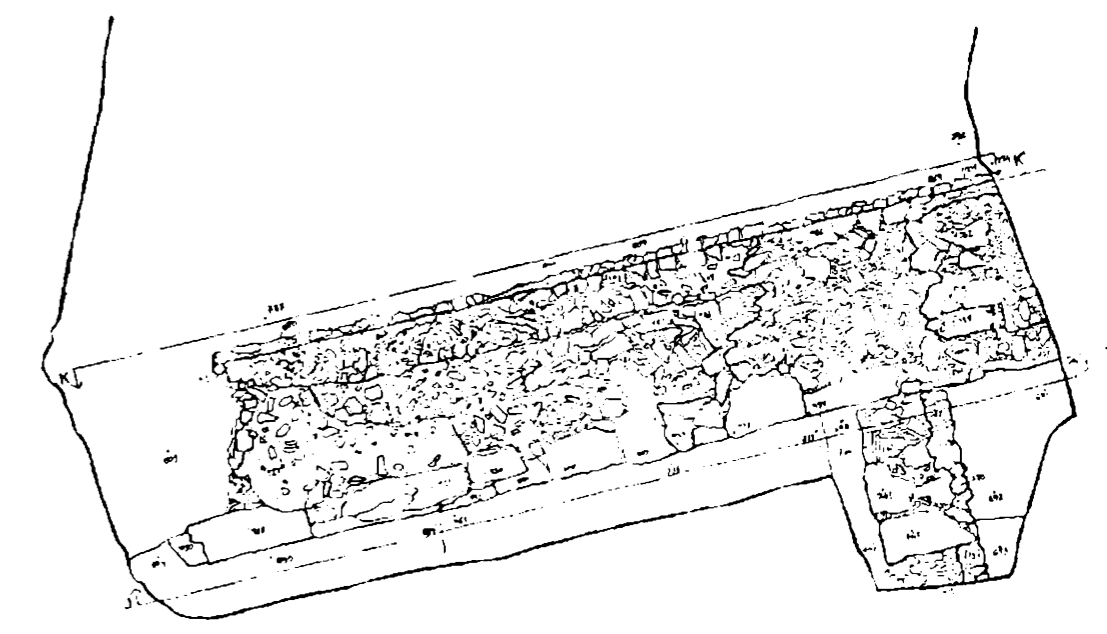
OBRAĐA: BOŽJK SANDA



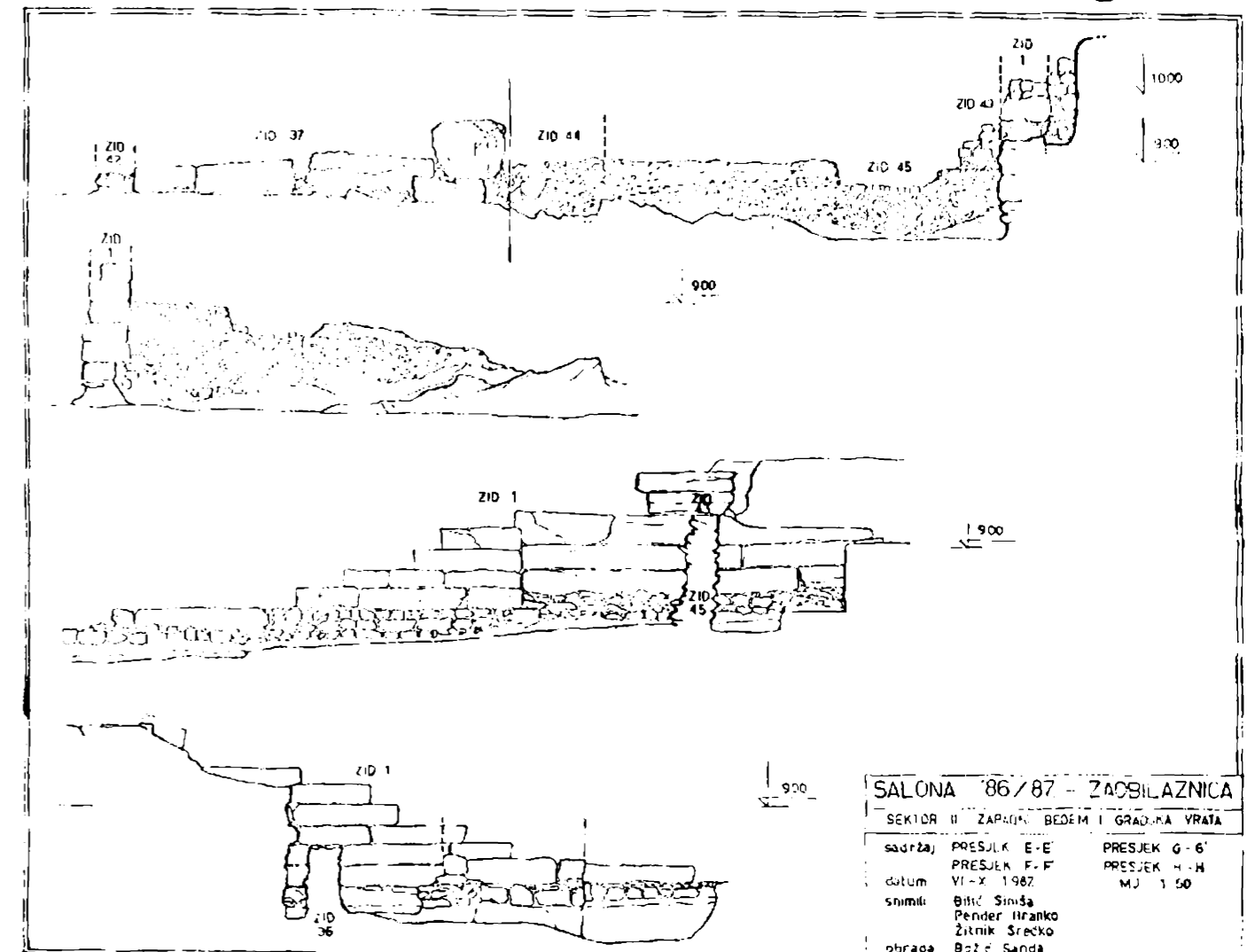
- G-15 LEGENDA
- G-17 ○ SKALJENI GROB BEZ ARHITEKTURE
  - KERAMIČKA URNA
  - KAMENA URNA - CILINDRIČNA
  - KAMENA URNA - KETVRIKUTNA
  - SKELETNI UKOP BEZ ARHITEKTURE
  - UKOP U AMPORI
  - ZIDANA GROBNICA

**SALONA '86/87 - ZAIBILAZNICA**  
 SEKTOR II - ZAPADNI BEDEM I GRADSKA VRATA

SADRŽAJ: TUDERT  
 M: 1:50  
 DATUM: VI-X 1987  
 SNIMILI: PENDER IRANKO  
 BILIĆ SINIŠA  
 IZRAĐA: BOŽIĆ SANDA



# PLAN 8



**SALONA '86/87 - ZAIBILAZNICA**  
 SEKTOR II - ZAPADNI BEDEM I GRADSKA VRATA

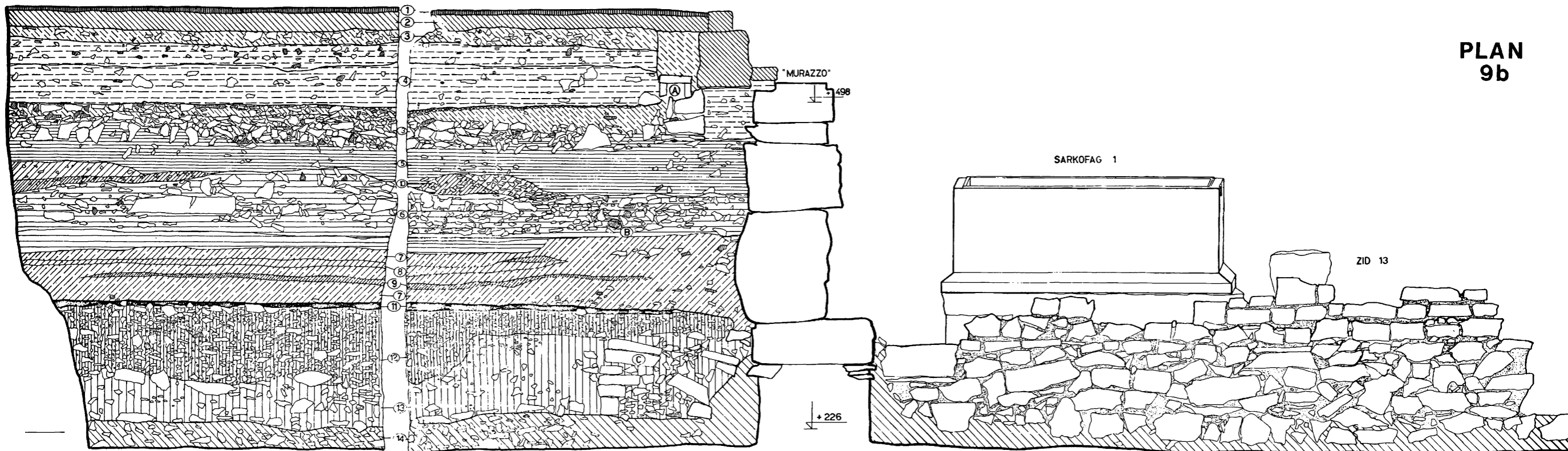
SADRŽAJ: PRESJEK E-E PRESJEK G-G  
 PRESJEK F-F PRESJEK H-H  
 datum: VI-X 1987 MJ: 1:50  
 snimili: Bilić Siniša  
 Pender Iranko  
 Žitnik Srčko  
 obrada: Božić Sanda



JUŽNI PROFIL

ZAPADNI PROFIL

PLAN  
9b



LEGENDA

- ① asfalt
- ② beton
- ③ naboj novijih cesta
- ④ humus uz novije ceste

- ⑤ srednjekovni humus
- ⑥ sloj sa srednjekovnim šutom
- ⑦ ljubičasti pijesak
- ⑧ žuti pijesak
- ⑨ sivi pijesak

- ⑩ naboj šljunka
- ⑪ antički humus
- ⑫ kameni naboj antičke ceste
- ⑬ zemjani naboj antičke ceste
- ⑭ crvenica s kamenjem

- Ⓐ energetski kabel
- Ⓑ mramorna antička glava
- Ⓒ žbuka
- Ⓓ ostaci antičkog kanala

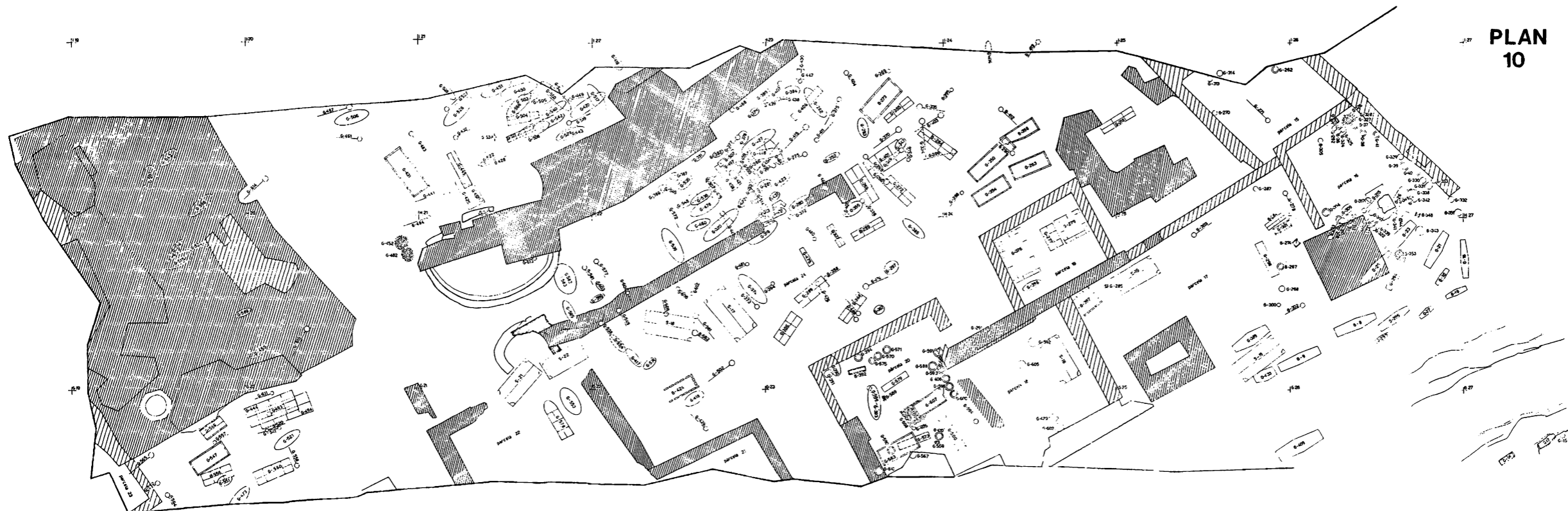
0 1 2 5m

SALONA '86 87. - ZAIBILAZNICA

SEKTOR III - JUŽNI DIO ZAPADNE NEKROPOLE

sadržaj: Presjek 1-1'  
Mj. 1:50  
datum: IV 1987  
snimio: Bilić Stiša  
obrada: Božić Sanda

# PLAN 10



LEGENDA	
oznaka groba	
	spajeni grob bez arhitekture
	staklena oia
	keramička urna
	kamena urna / cilindrična
	kamena urna / četvrtasta
	skeletni ukop bez arhitekture
	ukop u drveni sanduk
	ukop u amfori
	grob pod tegulama
	zidana grobnica s tegulama
	zidana grobnica
	sarkofag
	srednjevjekovni grob
faza gradnje	
	1. faza
	2. faza
	3. faza
	4. faza

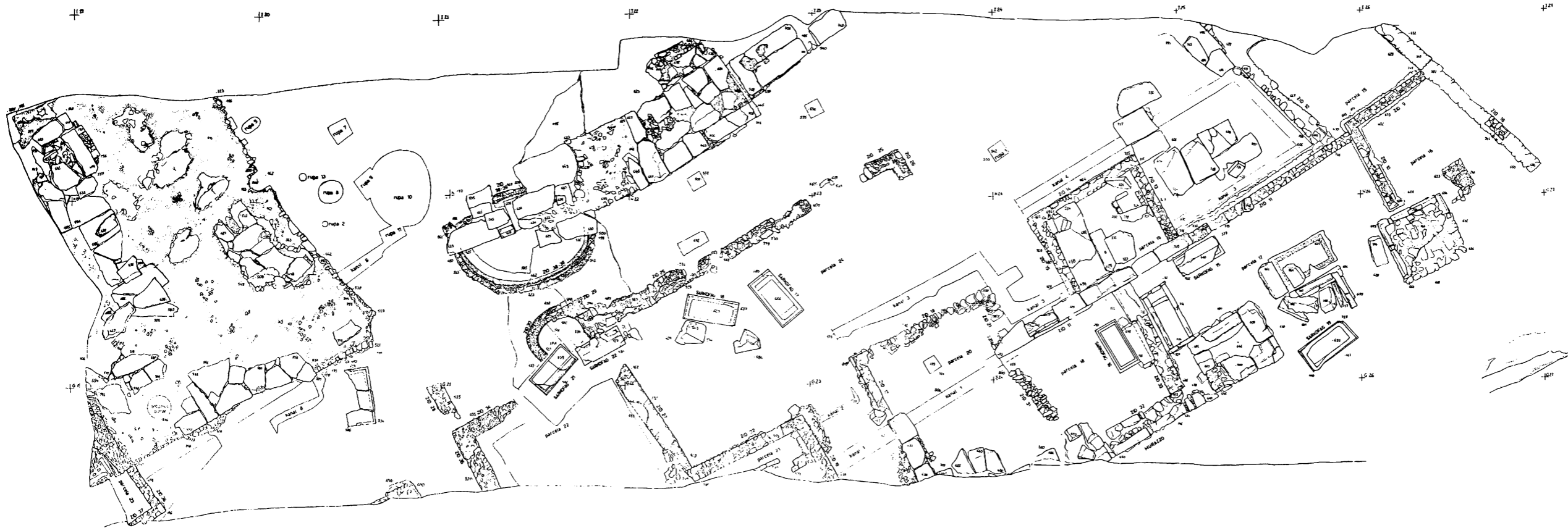
0 1 2 3 4 5m

SALONA '86/87 - ZAobilaznica  
SEKTOR II - Sjeverni dio  
ZAPADNE NEKROPOLJE

sadržaj: dispozicija grobova  
na nekropoli  
M: 1:50

datum: V-XI 1987.  
snimio: B. Pender  
obrada: S. Božić

# PLAN 10a



SALONA '86/87 - ZAOBLAZNICA	
SEKTOR II - SJEVERNI DO ŽUPANE NEKROPOLJE	
SADRŽAJ :	TLAČITI
MAŠTAJ :	MJ 1:50
DATUM :	V-III 1987
ŠIFRO :	BRANO PENDER
OSNOVA :	BRNO BUDIC